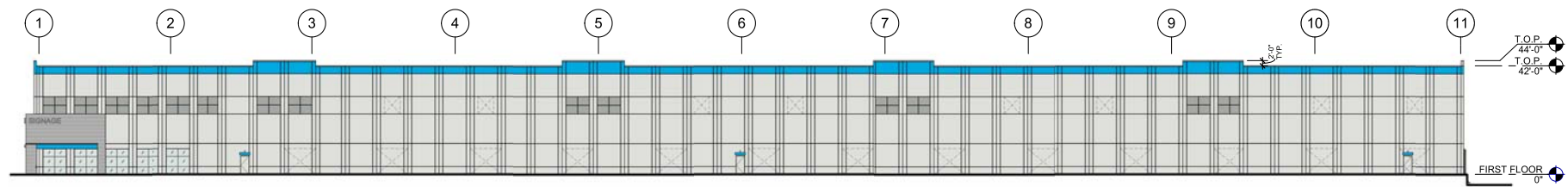
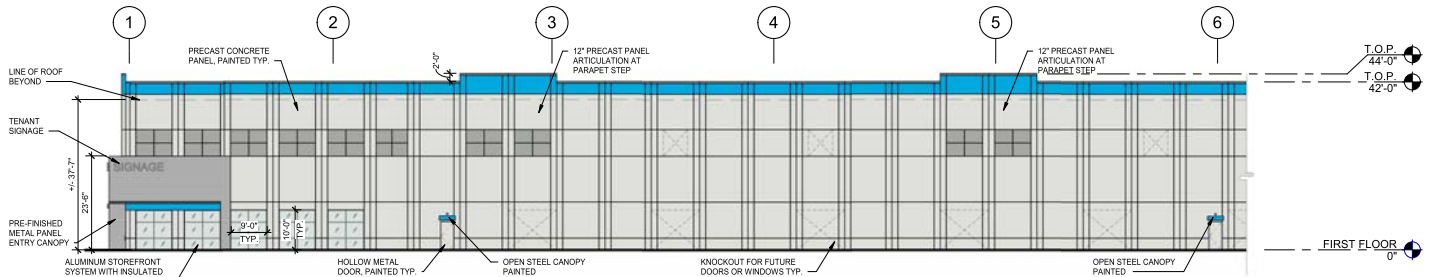


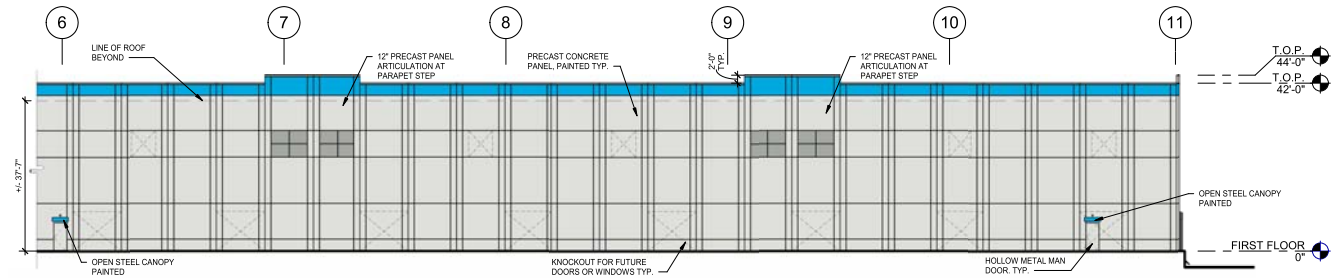
WEST ELEVATION ①
SCALE: 1/16" = 1'-0"



OVERALL SOUTH ELEVATION ②
SCALE: 3/64" = 1'-0"



PARTIAL SOUTH ELEVATION ③
SCALE: 1/16" = 1'-0"



PARTIAL SOUTH ELEVATION ④
SCALE: 1/16" = 1'-0"

LEGEND

- COLORS:**
- BASE COLOR - MANUFACTURER: SHERWIN WILLIAMS
COLOR: NEBULOUS WHITE / SW 7063
 - SECONDARY COLOR - MANUFACTURER: SHERWIN WILLIAMS
COLOR: GRAY MATTERS / SW 7066
 - ACCENT COLOR - MANUFACTURER: SHERWIN WILLIAMS
COLOR: PANTONE / 2955 C
 - ACCENT COLOR - MANUFACTURER: MFR.
COLOR: MANU. STANDARD "BRIGHT WHITE"

MATERIALS

WEST ELEVATION		
PAINTED CONCRETE PRECAST PANEL	6,689 SF	77 %
PREFINISHED CLEAR ANODIZED STOREFRONT WITH GLAZING	1,260 SF	14 %
CONCEALED FASTENER METAL PANEL	784 SF	9 %
TOTAL WEST ELEVATIONS AREA	8,733 SF	

NO.	REVISION	BY	DATE

Kimley»Horn
2020 KIMLEY-HORN AND ASSOCIATES, INC.
4852 South Ulster Street, Suite 1500
Denver, Colorado 80237 (303) 228-2300

DRAWN BY: JAS
CHECKED BY: SS

DATE: 12/04/2020

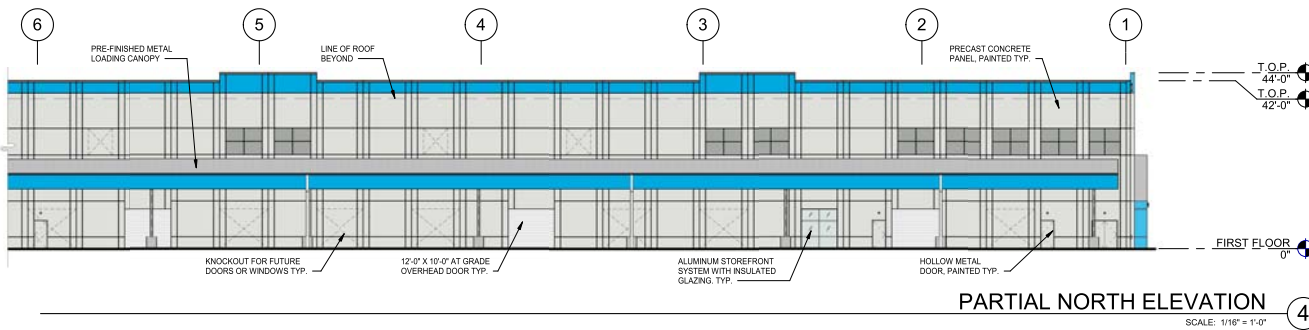
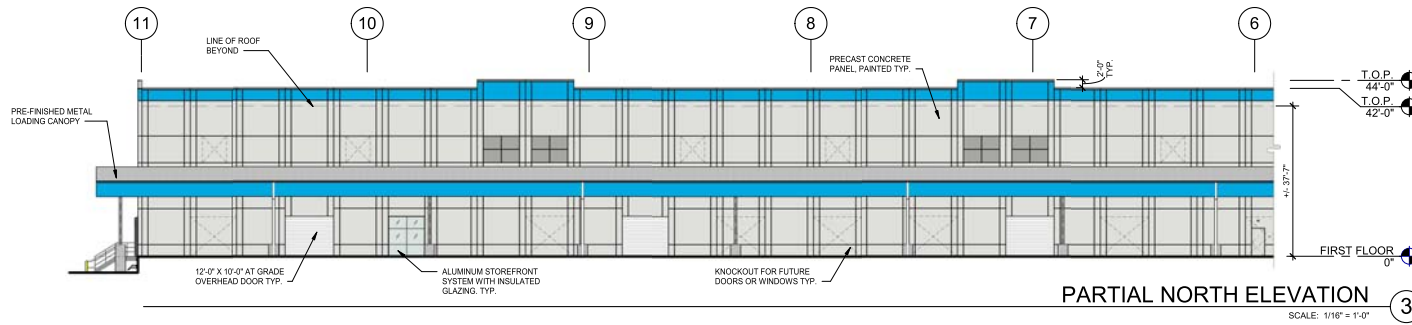
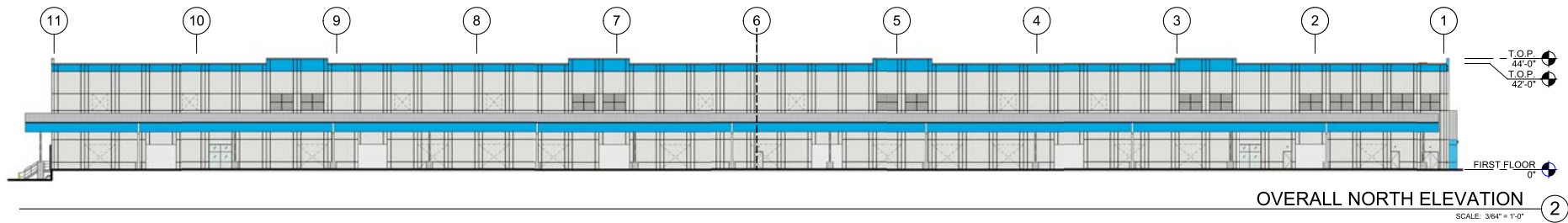
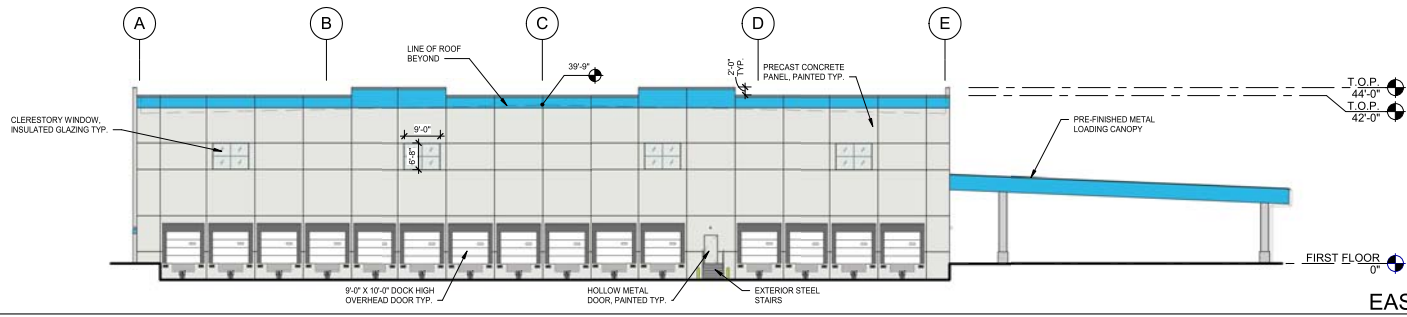
PROJECT INDIANA
ARVADA, COLORADO
PRELIMINARY DEVELOPMENT PLAN

PRELIMINARY
FOR REVIEW ONLY
NOT FOR
CONSTRUCTION
Kimley»Horn
Kimley-Horn and Associates, Inc.

PROJECT NO.
DAL20-0016-00
ARCHITECTURAL
ELEVATIONS

WARE MALCOMB

811 Know what's below.
Call before you dig.



LEGEND

COLORS:

- BASE COLOR - MANUFACTURER: SHERWIN WILLIAMS COLORING: NEBULOUS WHITE / SW 7063
- SECONDARY COLOR - MANUFACTURER: SHERWIN WILLIAMS COLORING: GRAY MATTERS / SW 7066
- ACCENT COLOR - MANUFACTURER: SHERWIN WILLIAMS COLORING: PANTONE / 2995 C
- ACCENT COLOR - MANUFACTURER: MFR COLORING: MANU. STANDARD "BRIGHT WHITE"

NO.	REVISION	BY	DATE

Kimley»Horn
 2020 KIMLEY-HORN AND ASSOCIATES, INC.
 4852 South Ulster Street, Suite 1500
 Denver, Colorado 80237 (303) 228-2300

DRAWN BY: JAS
 CHECKED BY: SS
 DATE: 12/04/2020

PROJECT INDIANA
 ARVADA, COLORADO
 PRELIMINARY DEVELOPMENT PLAN

PRELIMINARY
 FOR REVIEW ONLY
 NOT FOR
 CONSTRUCTION
Kimley»Horn
 Kimley-Horn and Associates, Inc.

WARE MALCOMB

811 Know what's below.
 Call before you dig.

PROJECT NO.
 DAL20-0016-00
 ARCHITECTURAL
 ELEVATIONS